

## PLATES

Plates follow the order of the discussion.



ΡΟΥΦΕΙΝΑ ΙΟΥ ΔΑΙΑ ΑΡΧΙ  
 ΕΥΝΑΓΩΓΟΣ ΚΑΤΕΣΚΕΥΑ  
 ΣΕΝΤΟ ΕΝ ΕΟΡΙΟΝ ΤΟΙΣ ΑΠΕ  
 ΛΕΥΘΕΡΟΙΣ ΚΑΙ ΘΡΕΜΑΣΙΝ  
 ΜΗΔΕΝΟΣ ΑΛΟΥΕΞΟΥΣΙΑΝ Ε  
 ΧΟΝΤΟ ΕΘΑΥΑΙ ΤΙΝΑ ΕΙΔΕΤΙΣ ΤΟΛ  
 ΜΗ ΕΙΔΩΣ ΕΙΤΩ ΙΕΡΩΤΑΤΩ ΤΑ  
 ΜΕΙΩ Χ' ΑΡΚΑΙΤΩ ΕΘΝΕΙ ΤΩΝ ΙΟΥ  
 ΔΑΙΩΝ Χ' Α ΤΑΥΤΗΣ ΤΗΣ ΕΠΙΓΡΑΦΗΣ  
 ΤΟ ΑΝΤΙΓΡΑΦΟΝ ΑΠΟΚΕΙΤΑΙ  
 ΕΙΣ ΤΟ ΑΡΧΕΙΟΝ

CII 741; IGR IV 1452. From BEJ 7 (1883) 161 (Salomon Reinach).  
 See discussion on pp. 5-7; 10-11.

PLATE II

Plate removed due to copyright

CII 73lc. From Hesperia 32 (1963) pl. 64, no. 1  
(A. C. Bandy; Courtesy of the American School of  
Classical Studies at Athens). See discussion on  
pp. 11-12; 41.



Plate removed due to copyright

CII 756. From Goodenough 3. fig. 883. See discussion on pp. 13-14.



CII 692. From R.M. Dawkins and F.W. Hasluck, The Annual of the British School at Athens XII, session 1905-06, 179, no. 5. See discussion on pp. 41-42.

Plate removed due to copyright

SEG 27 (1977) no. 1201. From Quaderni di Archeologia della Libia  
9 (1977) 115, fig. 4 (Pietro Romanelli). See discussion on pp. 44–45.

Plate removed due to copyright

CII 166. From CII. See discussion on p. 59.

Plate removed due to copyright

CII 496. From CII. See discussion on pp. 59-60.

Plate removed due to copyright

CII 315. From CII. See discussion on pp. 75-76.

Plate removed due to copyright

CII 1007. From Mazar, Beth She'arim pl. XV, no. 5. See discussion on pp. 76-77.

GEOGRAPHICAL AND CHRONOLOGICAL CHART OF INSCRIPTIONS MENTIONING WOMEN WHO BEAR TITLES

	DATE UNKNOWN	B.C.E. 200	100	0	C.E. 100	200	300	400	500	600
AFRICA										
Naro	1?									
Tripolitania								1 (4th/5th C)		
ASIA										
Caria								1 (4th/5th C.)		
Ionia					1 (2d C.)		1 (3d/4th C.)			
CRETE								1 (4th/5th C.)		
EGYPT				1 (27 B.C.E.)						
GREECE										
Thessaly	1									
ITALY										
Apulia										
Brescia	1									
Rome	1									
PALESTINE										
Galilee								1 (4th C.)		
THRACE										
								1 (4th/5th C.)		



Plate removed due to copyright

MASADA. From Levine, Synagogues Revealed 25.

Plate removed due to copyright

HERODION. From Levine, Synagogues Revealed 28 (B).

Plate removed due to copyright

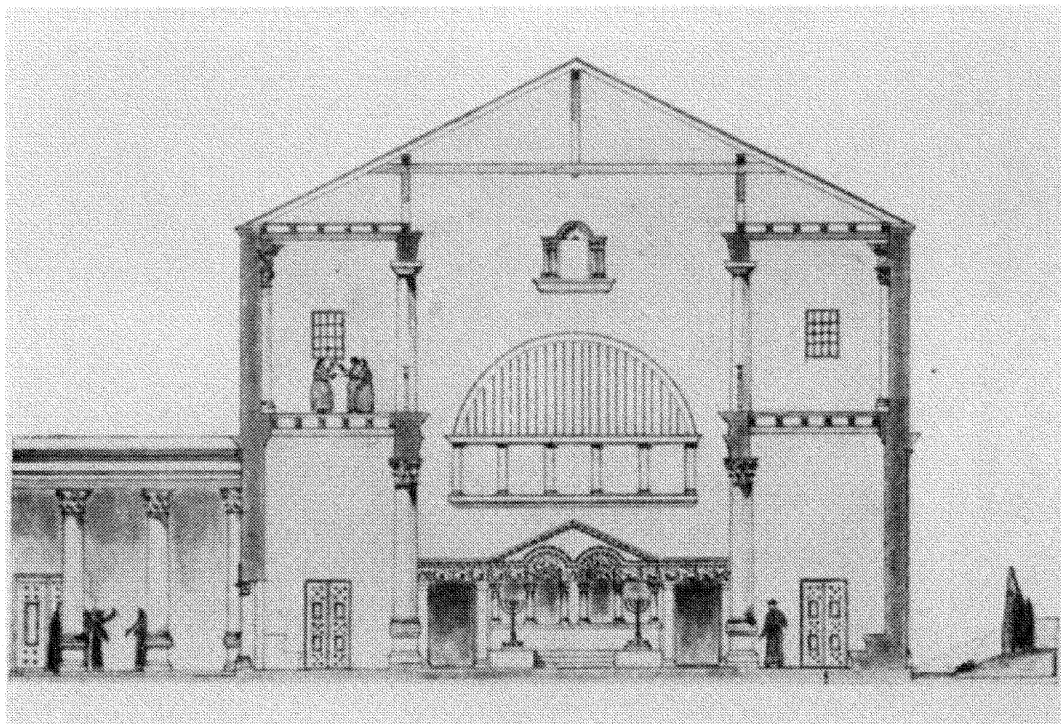
GAMLA. From BAR 5:1 (1979) 16.

Plate removed due to copyright

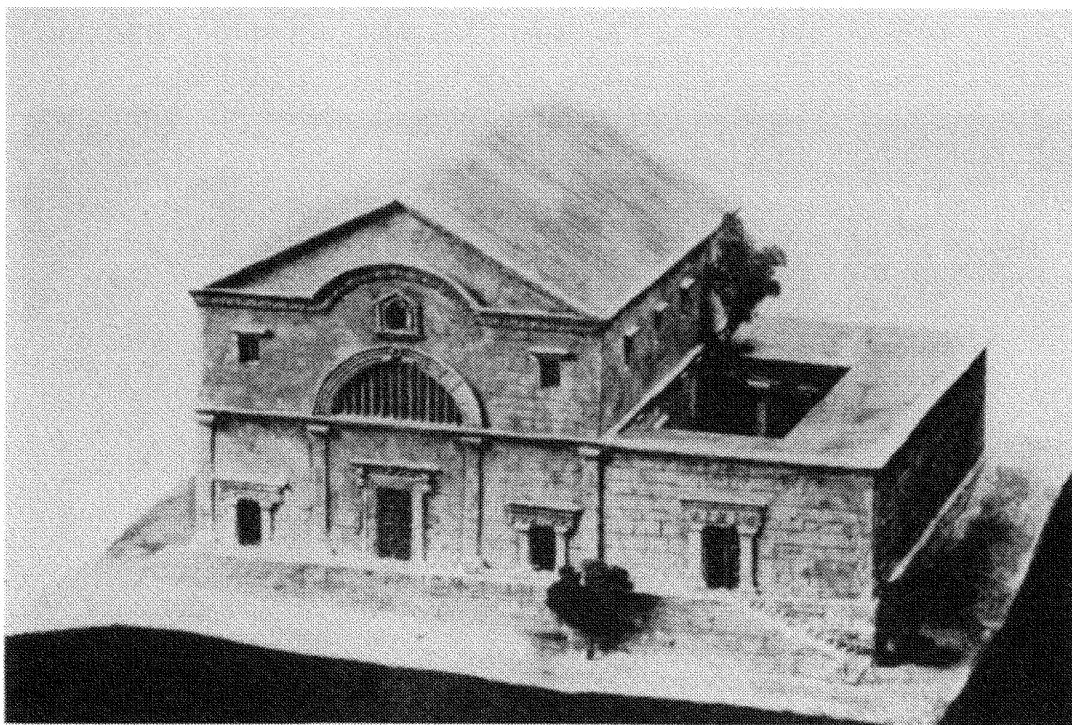
ESHTEMOA'. From EAE 2.386.

Plate removed due to copyright

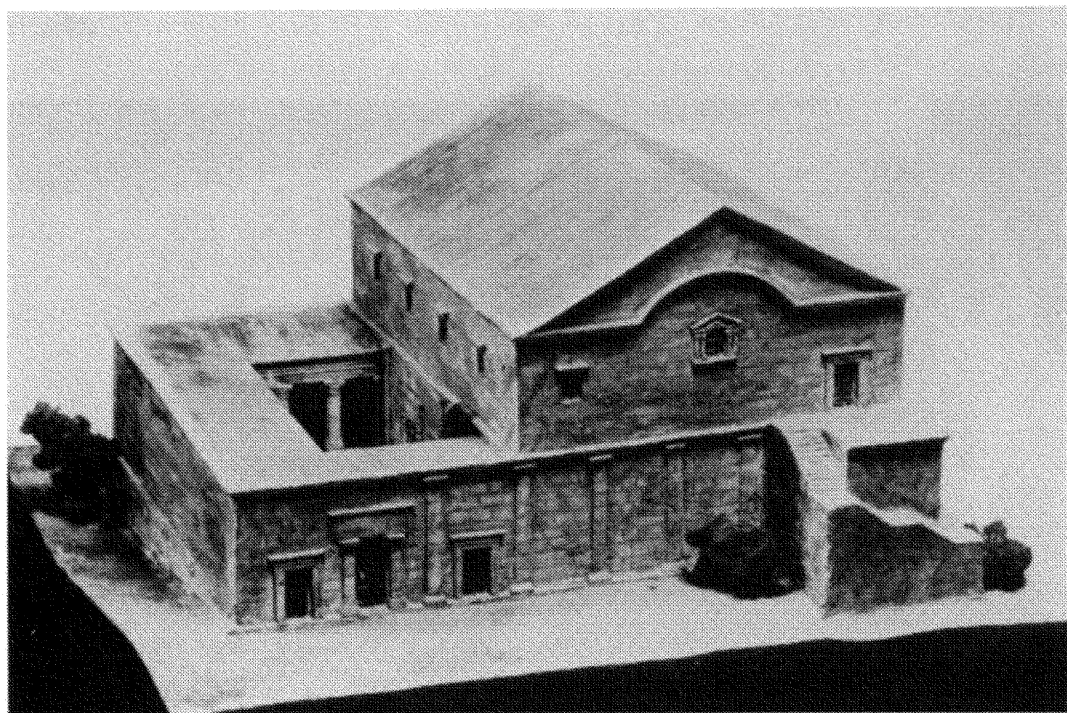
BETH SHE'AN. From EAE 1.226.



CAPHARNAUM. From Kohl and Watzinger pl. IV. Reconstruction with a view to the south.



CAPHARNAUM. From Kohl and Watzinger pl. V. Reconstruction model.



CAPHARNAUM. From Kohl and Watzinger pl. VI. Model showing reconstructed back entrance.



Plate removed due to copyright

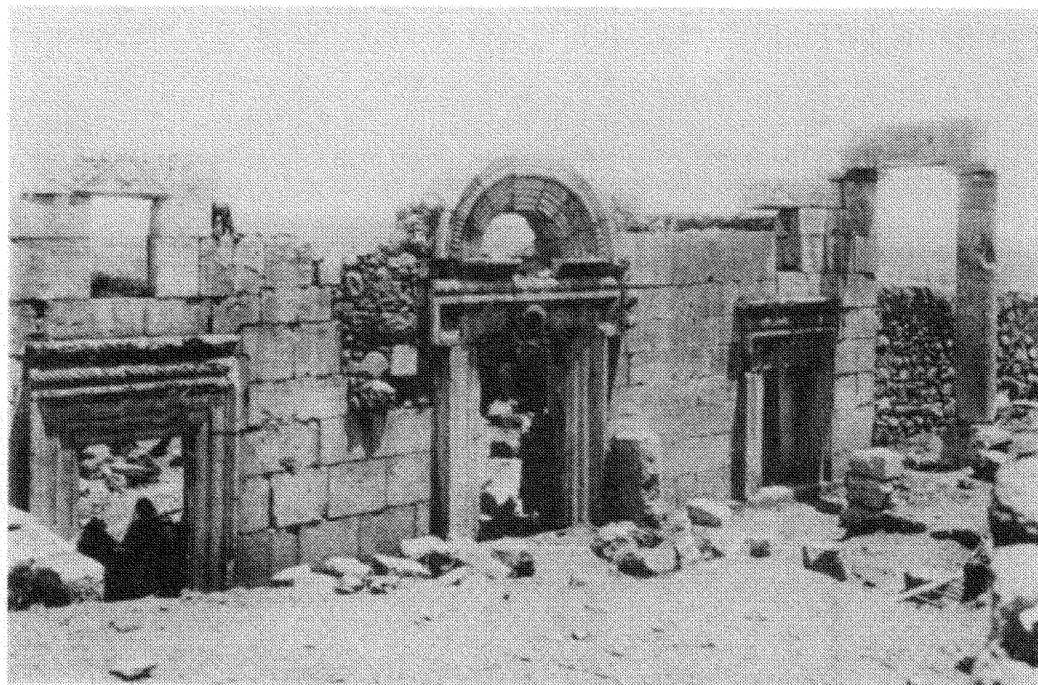
CAPHARNAUM. From Levine, Synagogues Revealed 53.

Plate removed due to copyright

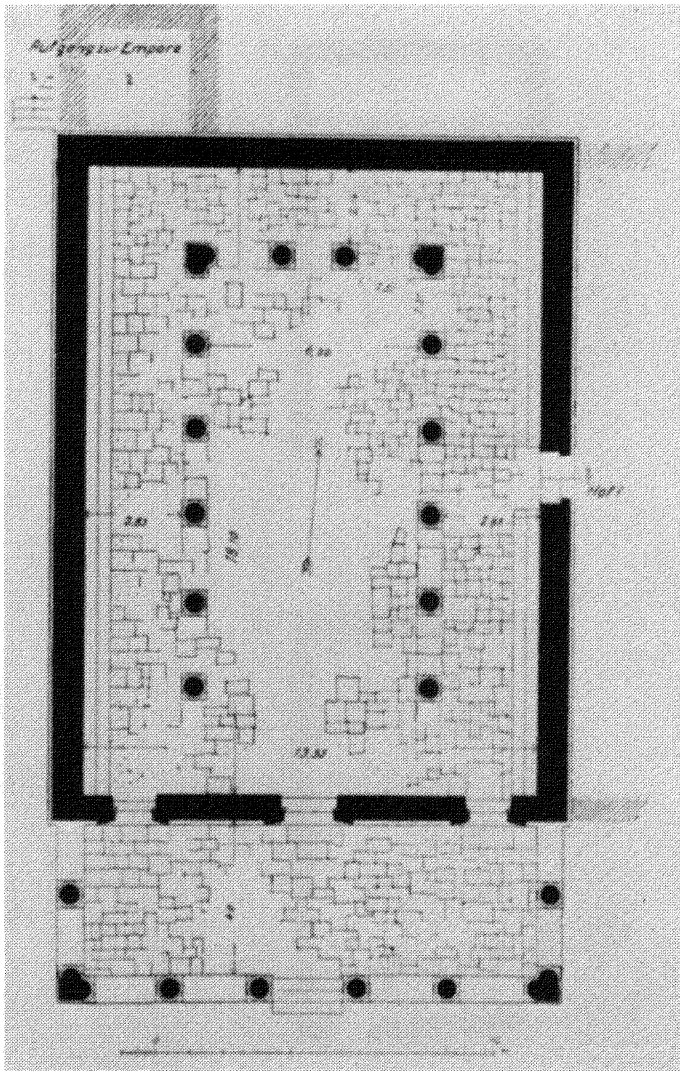
KORAZIM. From Goodenough 3. fig. 484.

Plate removed due to copyright

AN-NABRATEN. From IEJ 31:1-2 (1981) 109, fig. 1 (E[ric] M. Meyers,  
J[ames] F. Strange, and Carol L. Meyers).



BAR'AM. From Kohl and Watzinger pl. XIII. View of the facade.



BAR'AM. From Kohl and Watzinger pl. XII.

Plate removed due to copyright

KHIRBET SHEMA'. From BASOR 221 (1976) 98. (Courtesy of Eric M. Meyers, John F. Thompson, and the American Schools of Oriental Research).

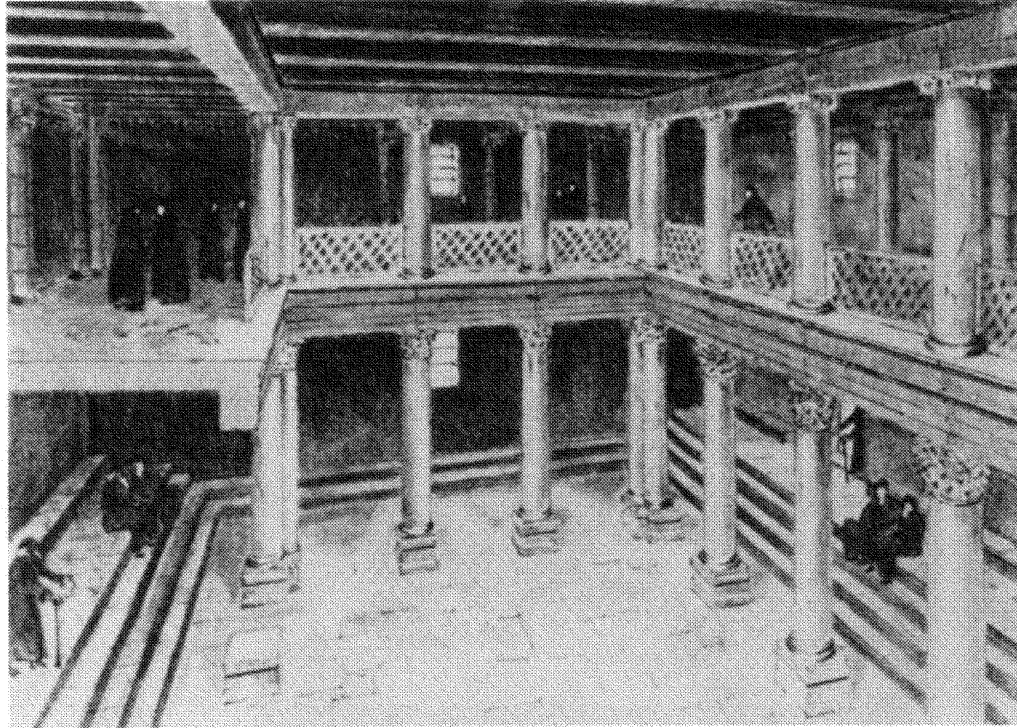
Plate removed due to copyright

MEIRON. From BASOR 221 (1976) 98. (Courtesy of Eric M. Meyers,  
John F. Thompson, and the American Schools of Oriental Research).

Plate removed due to copyright

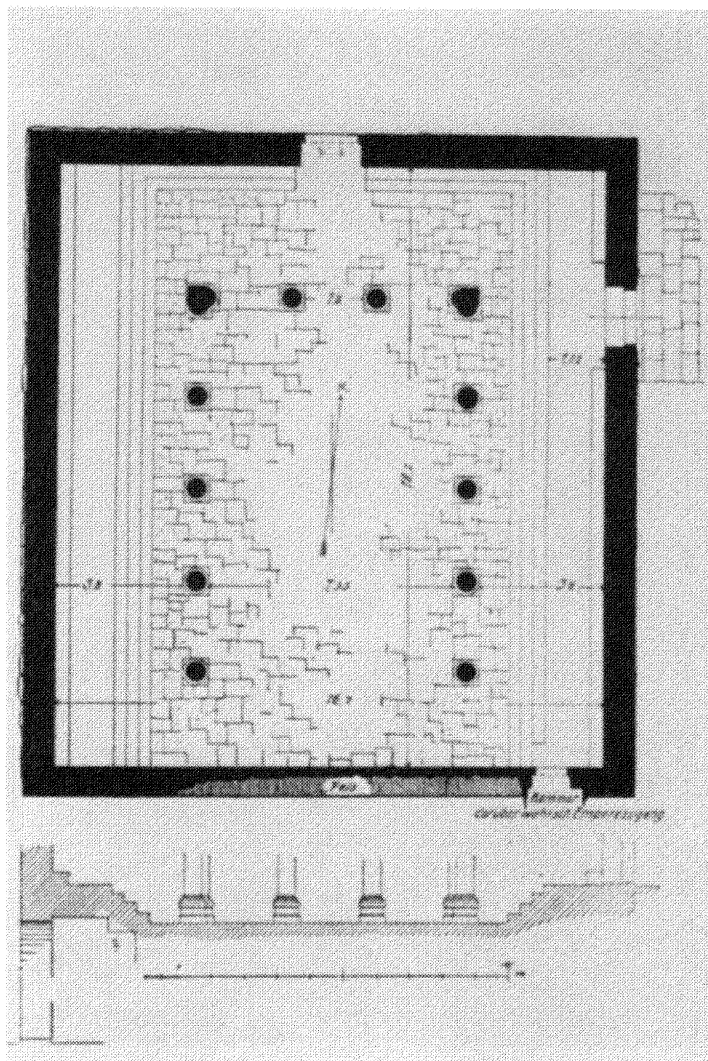
GUSH HALAV. From Levine, Synagogues Revealed 76.



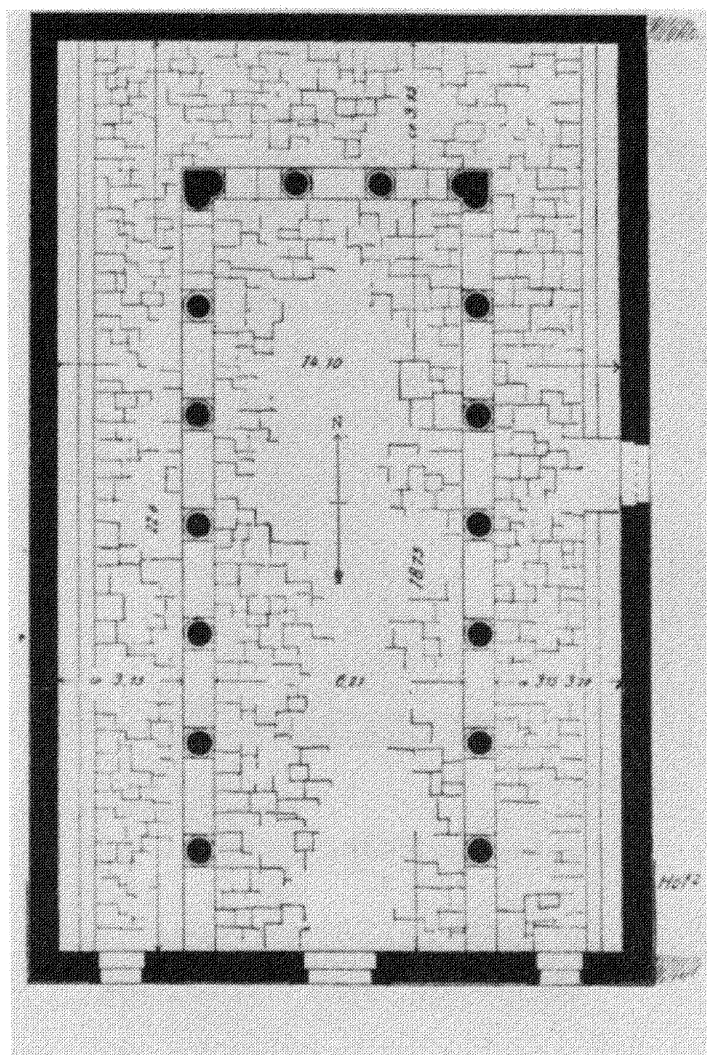


ARBEL. From Kohl and Watzinger pl. IX. Reconstruction of the interior.

# PLATE XXVIII



ARBEL. From Kohl and Watzinger pl. VIII.



UMM AL-'AMAD. From Kohl and Watzinger pl. X.

Plate removed due to copyright

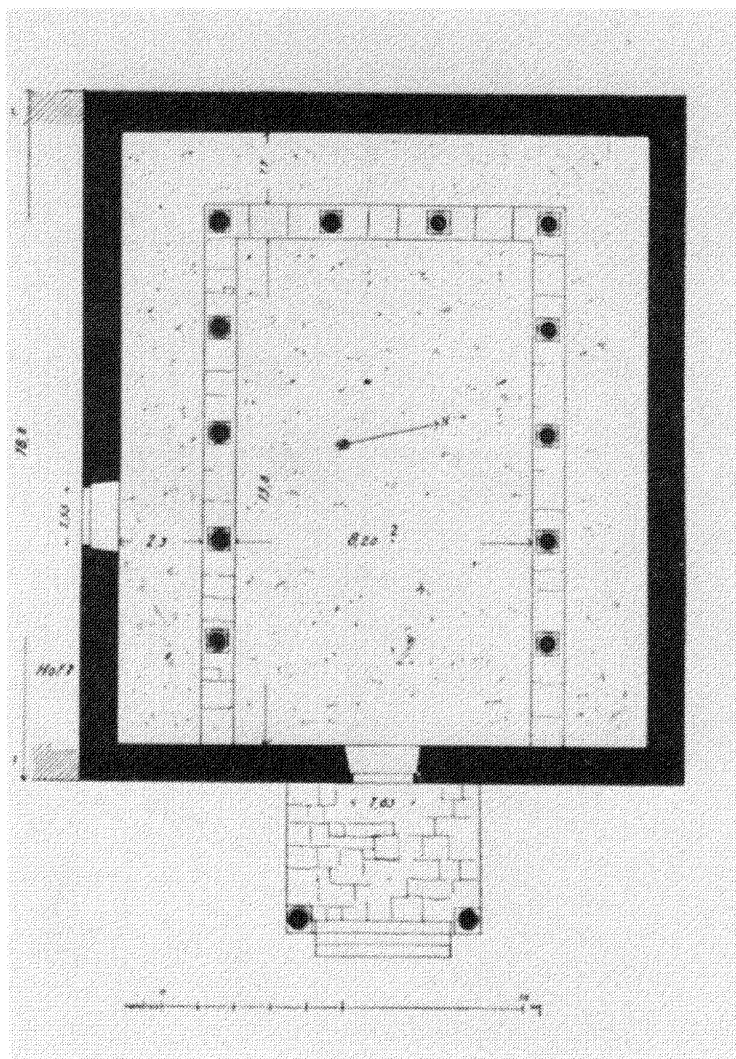
ḤAMMAT TEVERYA. From Levine, Synagogues Revealed  
65.

Plate removed due to copyright

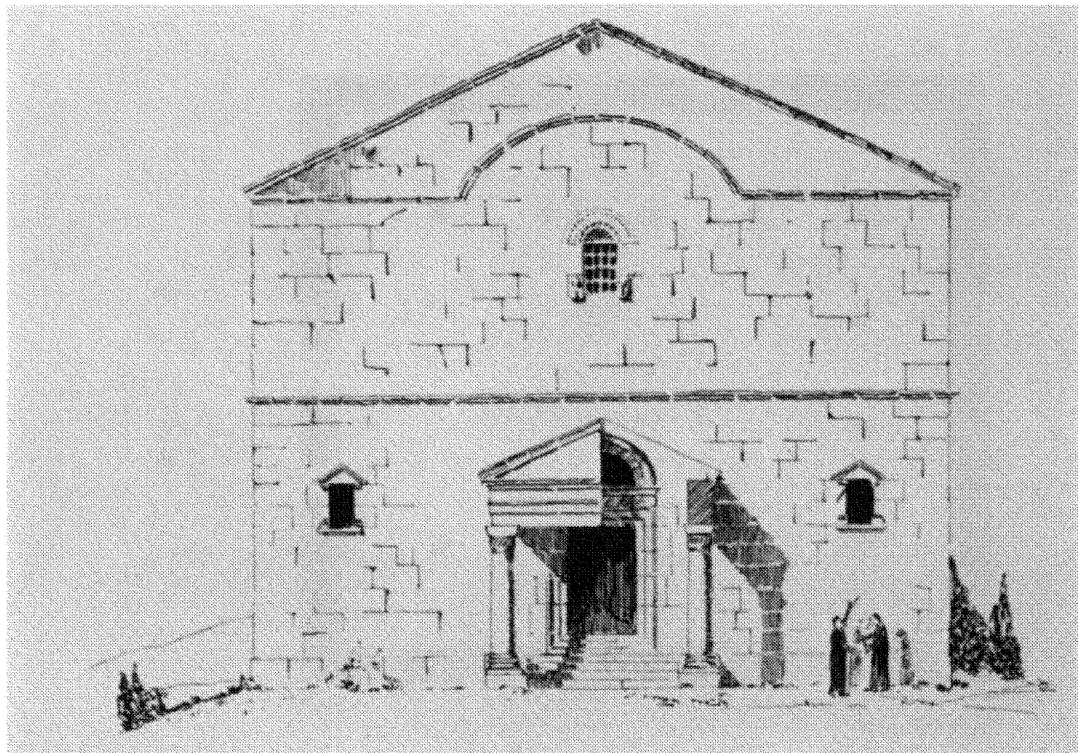
HAMMAT TEVERYA. From Levine, Synagogues Revealed  
68.

Plate removed due to copyright

ḤAMMAT GADER. From EAE 2.472.

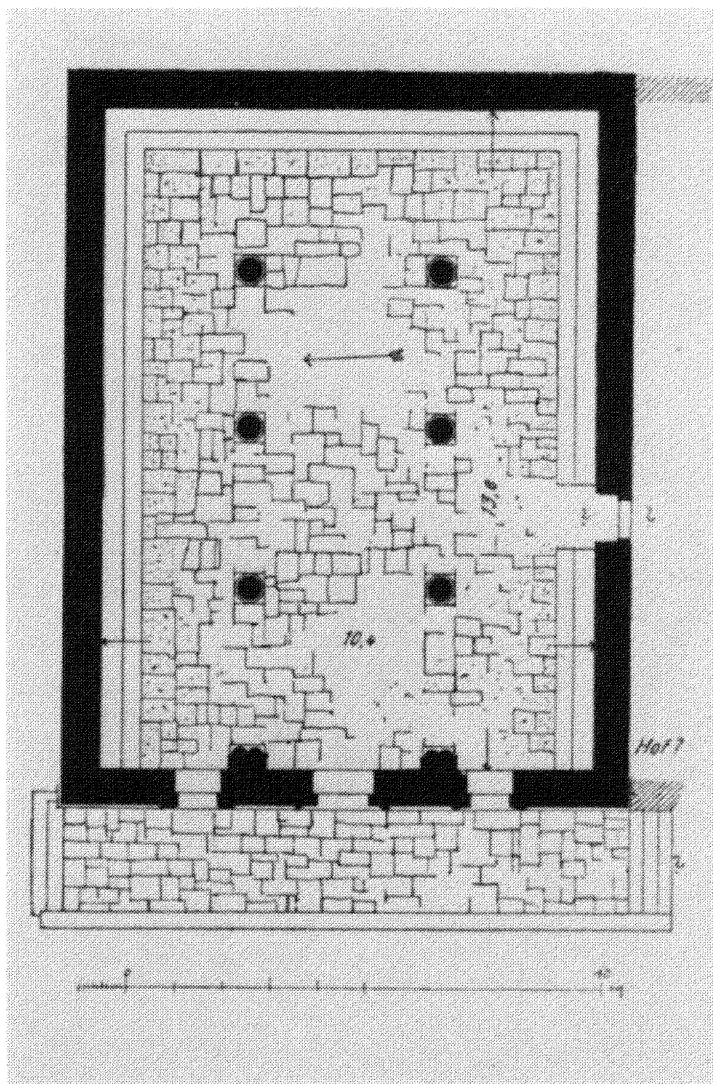


UMM AL-QANATIR. From Kohl and Watzinger pl. XVII.

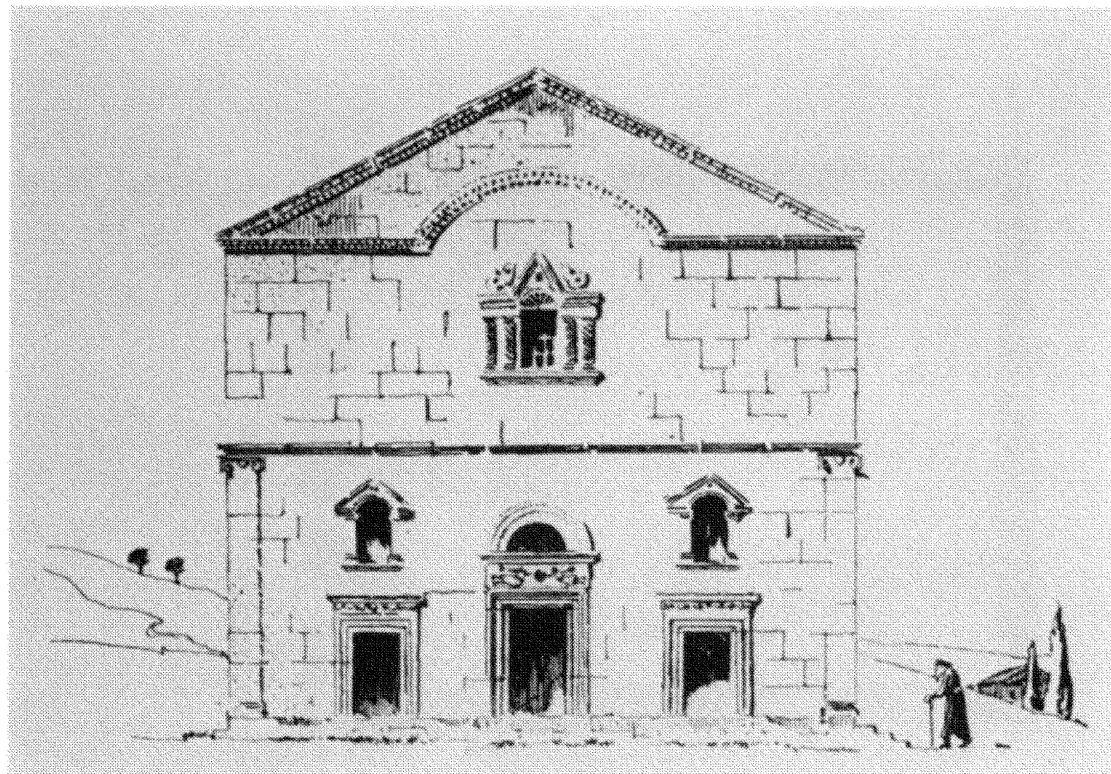


UMM AL-QANATIR. From Kohl and Watzinger 134.





AD-DIKKA. From Kohl and Watzinger pl. XVI.



AD-DIKKA. From Kohl and Watzinger 124.

Plate removed due to copyright

BETH ALPHA. From Goodenough 3. fig. 631.

Plate removed due to copyright

BETH ALPHA. From Goodenough 3. fig. 64l.

Plate removed due to copyright

'EN-GEDI. From Levine, Synagogues Revealed 117.

Plate removed due to copyright

KHIRBET SUSIYA. From EAE 4.1126.

Plate removed due to copyright

DABBURA INSCRIPTION. From IEJ 22 (1972) pl. 4 (Dan Urman) .

Plate removed due to copyright

DELOS. From Goodenough 3. fig. 875.



Plate removed due to copyright

AEGINA. From Goodenough 3. fig. 881.

Plate removed due to copyright

SARDIS. From AJA 76 (1972) 429, ill. 2 (Andrew R. Seager). With the permission of the editors and the author.

Plate removed due to copyright

PRIENE. From Goodenough 3. fig. 879.

Plate removed due to copyright

MILETUS. From Goodenough 3. fig. 880.

Plate removed due to copyright

STOBI. From Archaeology 30 (1977) 152 (Dean L. Moe).

Plate removed due to copyright

STOBI. From Archaeology 30 (1977) 154-155 (Dean L. Moe).

Plate removed due to copyright

OSTIA. From Archaeology 16 (1963) 194 (Maria Floriani Squarciapino).

PLATE L

Plate removed due to copyright

DURA EUROPOS. From Goodenough 3. fig. 593.



Plate removed due to copyright

DURA EUROPOS. From Goodenough 3. fig. 594.

PLATE LII

Plate removed due to copyright

HAMMAM LIF. From Goodenough 3. fig. 886.

Plate removed due to copyright

HAMMAM LIF. From Goodenough 3. fig. 894 (Bardo Museum).



NOTES  
(Pages 1-7)

Notes to the Introduction

<sup>1</sup>Krauss, Altertümer 149.

<sup>2</sup>A recent example would be Emil Schürer, History 2.435-436. The editors simply add to the footnotes the newly discovered inscriptions in which women bear titles, without calling into question Schürer's view that they were honorific.

<sup>3</sup>A(1f) Thomas Kraabel, Judaism in Western Asia Minor under the Roman Empire, with a Preliminary Study of the Jewish Community at Sardis, Lydia (Th.D. dissertation, Harvard University, 1968) 43-50; Dorothy Irvin, "The Ministry of Women in the Early Church: The Archaeological Evidence," The Duke Divinity School Review 45 (1980) 76-86, esp. 76-79; Shaye Cohen, "Women in the Synagogues of Antiquity," Conservative Judaism 34:2 (1980) 23-29.

<sup>4</sup>Louis Robert, Hellenica 1 (1940) 26-27; Jeanne Robert and Louis Robert, Bulletin épigraphique, Revue des études grecques 77 (1964) no. 413.

Notes to Chapter I

<sup>1</sup>Eusebius Hist. eccl. 7.10.4; CIG 2007f (Olynthos); 2221c (Chios) IG XII.2(1)288 (Thessalonica); Archäologisch-epigraphische Mittheilungen aus Österreich-Ungarn 19 (1896) 67.

<sup>2</sup>Salomon Reinach, "Inscription grecque de Smyrne. La Juive Rufina," REJ 7:14 (1883) 161-166 (facsimile). Reinach's dating of the inscription as not before the third century is based on the nearly cursive omega, the squared sigma and the bar through the upsilon, all of which point to a late date.

<sup>3</sup>Schürer, Gemeindeverfassung 29, cited and discussed by S. Reinach, "Inscription" 165.

<sup>4</sup>See CII 584, 587.

<sup>5</sup>"Die Organisation der jüdischen Ortsgemeinden in der talmudischen Zeit," Monatsschrift für Geschichte und Wissenschaft des Judentums 41, n.s. 5 (1897) 658-659.

<sup>6</sup>Schürer, History 2.435.

<sup>7</sup>Juster 1.453.

<sup>8</sup>Krauss, Altertümer 118.

<sup>9</sup>Baron, Community 1.97.

<sup>10</sup>Jean-Baptiste Frey, CII 2.11.

<sup>11</sup>Louis Robert, Hellenica 1 (1940) 26-27.